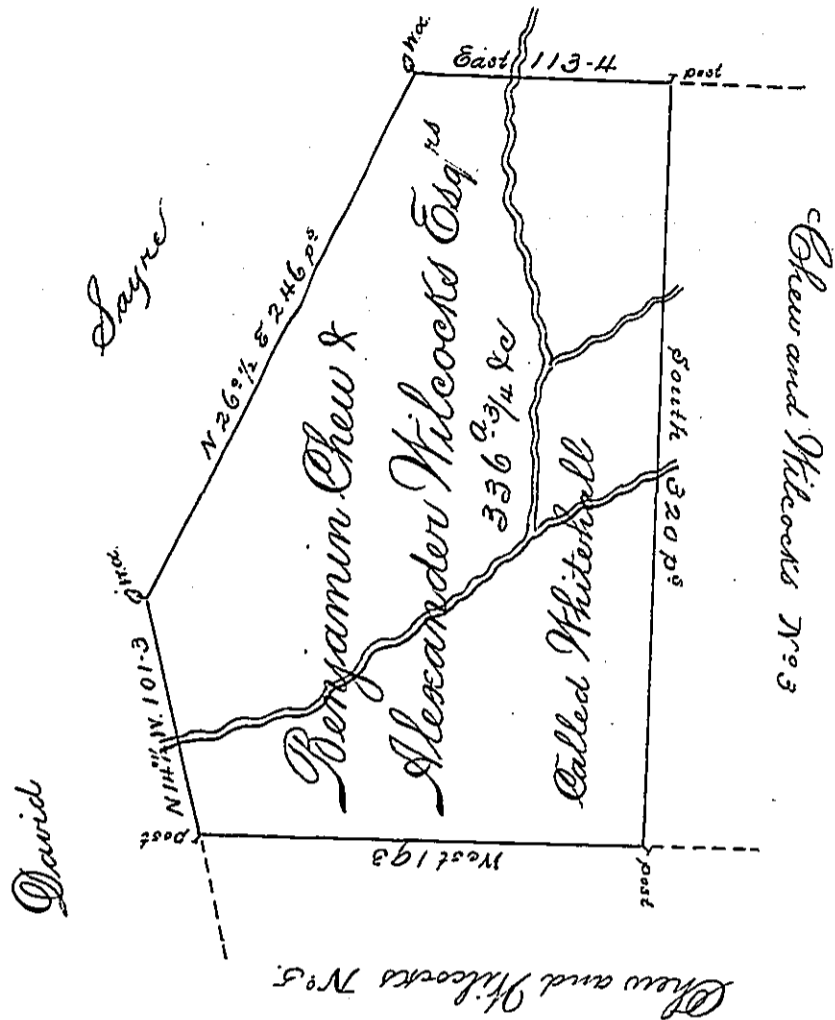


V a e a m t.



Situated on the Waters of Sandy Creek a Branch of Cheat River in Westmoreland County and Surveyed the 6th day of June 1776. At the Request of said Chew and Wilcocks in lieu of and in part satisfaction of 16 Warrants granted them the 5th day of October 1774. for lands before that time appropriated by divers other persons.

p^r Alexander McClean Dep^t

To John Lukens Esq^r Surveyor General

IN TESTIMONY that the above is a copy of the original remaining on file in the Department of Internal Affairs of Pennsylvania, made conformably to an Act of Assembly approved the 16th day of February, 1833, I have hereunto set my Hand and caused the Seal of said Department to be affixed at Harrisburg, this first day of November 1898.

James W. Latta
Secretary of Internal Affairs.